



SMART STEEL BUILDINGS

BUILD FAST. BUILD SMART.



EVEREST SMART STEEL BUILDINGS

Ideal for contemporary design in low-rise low span structures, Everest Smart Steel Buildings are 100% customised, aesthetic, durable and green buildings with inbuilt stability. Our innovative state-of-the-art technology is the fastest for manufacturing and erecting buildings. Using the core strength of high tensile steel, its Light Gauge Steel Frame system allows multiple applications across commercial and residential sectors. Everest Smart Steel Buildings offer great design flexibility and allow architects/ interior designers to choose from a large variety of external and internal finishes.

Timely performance, excellent service backup and a faster response time are the reasons that renowned companies like TATA, Ansal API, Jindal Steel & Power, DTTDC and POSCO trust Everest Smart Steel Buildings for their needs.



Everest Smart Steel Buildings built 60,000 sqft in just 90 days for the Ansal Institute of Technology, Lucknow and have been recognised by the Limca Book of Records for achieving the fastest construction for a commercial building!



The Everest Edge

- Trusted for over 79 years
- Complete transparency in working system
- Galvanised Purlins
- Constructed over 40 buildings
- System driven
- Fast and On Time Deliveries
- World class design & engineering softwares
- Complete project management including erection
- High tensile steel members (345MPa)

**ON TIME,
EVERY TIME!**



Everest ensures that timely delivery through systematic flow of processes. At every point in the construction process, checkpoints minimise errors thereby saving on time. Through our process-driven approach, reaction time decreases considerably; resulting in faster, accurate project completion.

Everest Design Centre in Uttarakhand



Design Section at Everest



Driven by **SPEED**

Everest is one of the very few companies to effectively implement and practice ERP. Our in-house SPEED module, built on SAPR3, has been a sound contributor in streamlining the entire manufacturing process and maximising overall efficiency. This system helps us deliver high quality products, on time, every time!

SPEED Ensures:

- A seamless integration of processes, from Request For Quotation (RFQ) to Project Handover
- Sequential supply system for the various blocks comprising the overall building
- Daily project updates for the customer
- Absolute transparency in working for all stakeholders
- Reduced reaction time to provide faster and accurate project completion
- Dedicated section for uploading of all drawings so that they can be retrieved at any time for any requirement later



ROOFTOP EXTENSIONS

Location: Delhi
 Area: 1,620 sqft
 Type of Building: Rooftop Extension
 Year of Construction: 2012

V. K. OILS LTD.



Key Features

- Easy erection on higher grounds due to light weight of material
- Less load on existing structure

Location: Kolkata
 Area: 11,000 sqft
 Type of Building: Rooftop Extension
 Year of Construction: 2010

NARULA INSTITUTE OF TECHNOLOGY



Key Features

- Rooftop Extension built on third floor
- Old existing structure
- Steel structure was further optimised to reduce dead load on existing building

RESORTS AND VILLAS

Location: Nainital
 Area: 1,500 sqft
 Type of Building: Cottage
 Year of Construction: 2013

ALTIF COMMUNICATIONS PVT. LTD.



Key Features

- This technology was adopted as it was on a hilly terrain and client wanted faster completion
- Minimal use of electricity and water

Location: Panvel, Mumbai
 Area: 2,152 sqft
 Type of Building: Cottage
 Year of Construction: 2013

PANVEL QUAD COTTAGE *(a project by Pancard Clubs Ltd.)*



Key Features

- This technology was adopted as it was on a coastal region
- Innovative construction

SAMPLE FLATS

Location: Pune
 Area: 6,250 sqft
 Type of Building: Site Office
 Year of Construction: 2010

AMANORA



Key Features

- Site office to be started quickly for launch of project
- Client wanted to showcase new-age products

Location: Lucknow
 Area: 6,998 sqft
 Type of Building: Sample Flat & Marketing Office
 Year of Construction: 2011

TULSIANI CONSTRUCTIONS & DEVELOPERS PVT. LTD.



Key Features

- Depiction of Design Flexibility
- Finishing as per corporate office interiors

MARKETING OFFICES

Location: Pune
 Area: 6,250 sqft
 Type of Building: Marketing Office
 Year of Construction: 2010

PEARL INFRASTRUCTURE



Key Features

- Challenge of hilly terrain with no proper access
- Octagonal-shaped structure with pyramidal roof
- Aesthetically finished as per corporate office exteriors and interiors
- Minimal use of electricity and water

Location: Nagpur
 Area: 5,715 sqft
 Type of Building: Sample Flat & Marketing Office
 Year of Construction: 2011

TATA REALTY



Key Features

- Use of hybrid construction
- Curved roofing
- Various levels in elevation
- Depiction of design flexibility

MARKETING OFFICES

Location: Keonjhar
Area: 19,950 sqft
Type of Building: Office
Year of Construction: 2012

THRIVENI EARTH MOVERS PVT. LTD.



Key Features

- Project executed at remote area
- Office to be started quickly for launch of project

Location: Basaidarapur, Delhi
Area: 7,880 sqft
Type of Building: Sub Registrar Office
Year of Construction: 2012

DELHI TRAVEL & TOURISM DEVELOPMENT CO.



Key Features

- Structure built with MS and LGSF
- Office to be started quickly for launch of project

INDUSTRIAL ACCOMMODATIONS

Location: Raigarh
Area: 28,500 sqft
Type of Building: Dormitory
Year of Construction: 2011

JINDAL STEEL AND POWER LTD.



Key Features

- Multi-storey Structure (G+3)
- Delivered Turnkey project
- Hybrid of MS and LGSF

Location: Roha
Area: 70,000 sqft
Type of Building: Living Accommodation
Year of Construction: 2013

POSCO MAHARASHTRA PVT. LTD.



Key Features

- 70,000 sqft built in only 150 days
- Challenging octagonal geometry of 20 dormitory buildings achieved in stipulated time frame of only five months, from scratch to finish

EDUCATIONAL INSTITUTE

Location: Mandi
Area: 25,300 sqft
Type of Building: Educational Block (1) & Hostel Blocks (2)
Year of Construction: 2013

IIT (MANDI) - EDUCATIONAL BLOCK



IIT (MANDI) - EDUCATIONAL BLOCK



Key Features

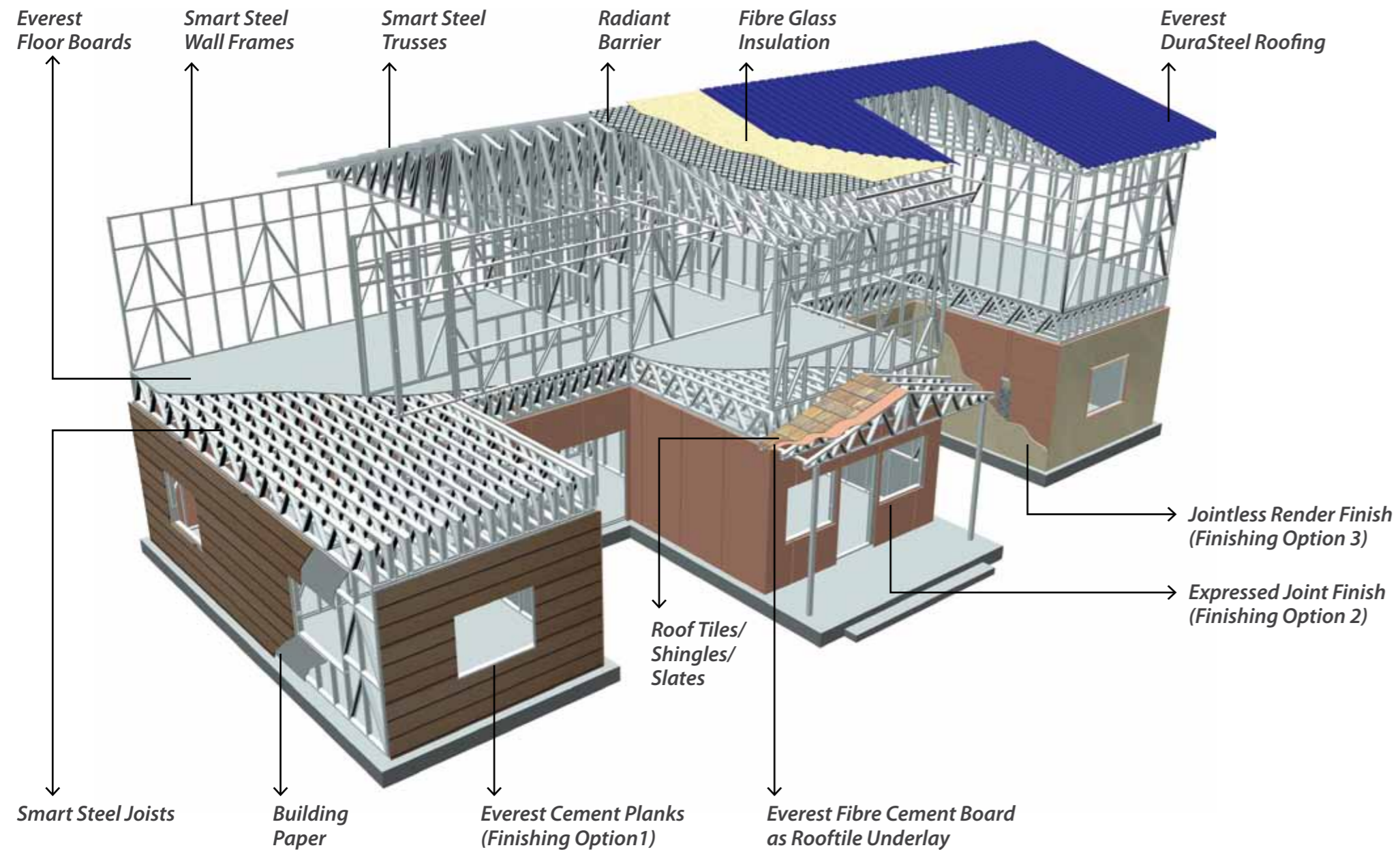
- Challenge of hilly terrain with no proper access
- Innovative construction
- Minimal use of electricity and water

IIT (MANDI) - BOYS HOSTEL

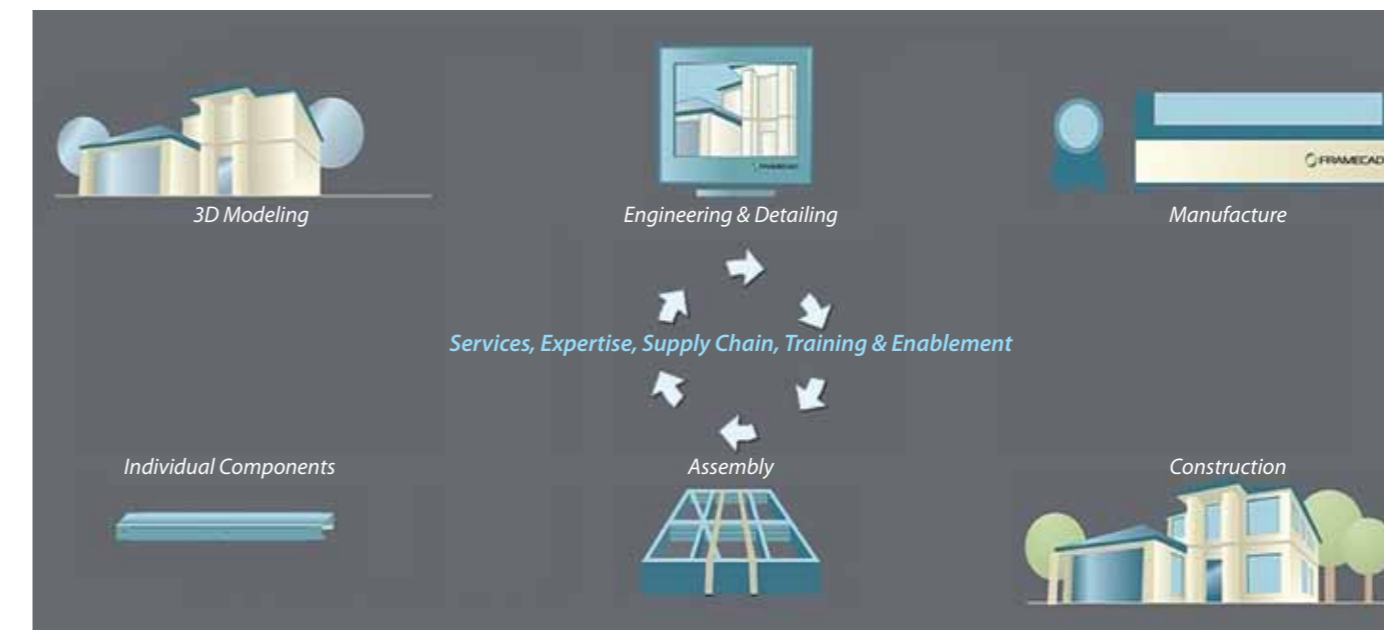


IIT (MANDI) - GIRLS HOSTEL



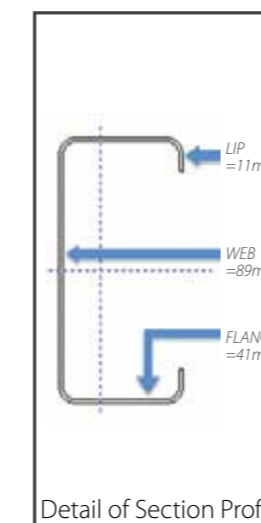


Components of Everest Smart Steel Building



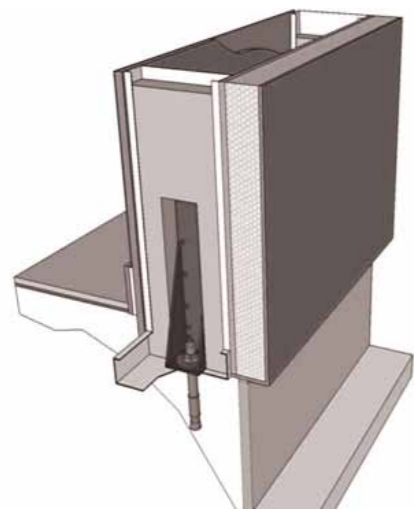
DESIGN PROCESS

- Everest Smart Steel Buildings translates your drawing plans into a ready-to-erect 3D steel framework within a few days
- Light Gauge Steel Frame system as per international standard code (AS/NZ4600, AISI100, IBC2003)
- The 'Z' and 'C' sections of these buildings are designed as per Australian and New Zealand standards, however the building is designed as per IS codes for seismic, wind loads, dead and live loads
- Complete back up of all drawings including assembly and erection
- Hybrid Steel construction as required from time to time
- **Complete, Fast and Accurate One-Stop Solution!**

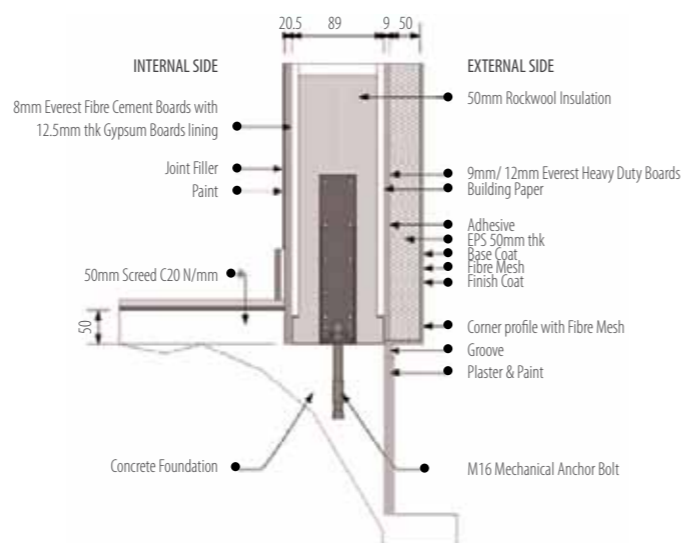


TYPICAL SYSTEM SECTION DETAILS

Typical Ground Floor Wall Section with Slab

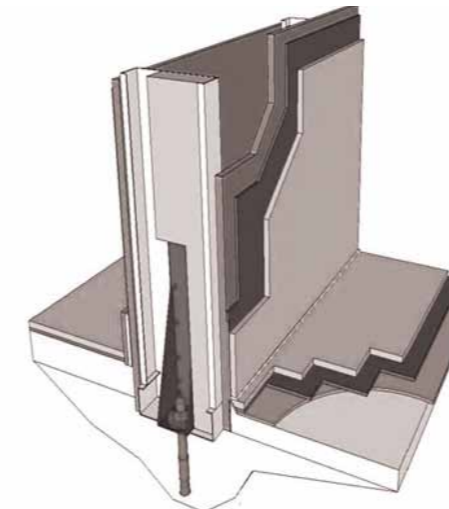


Perspective

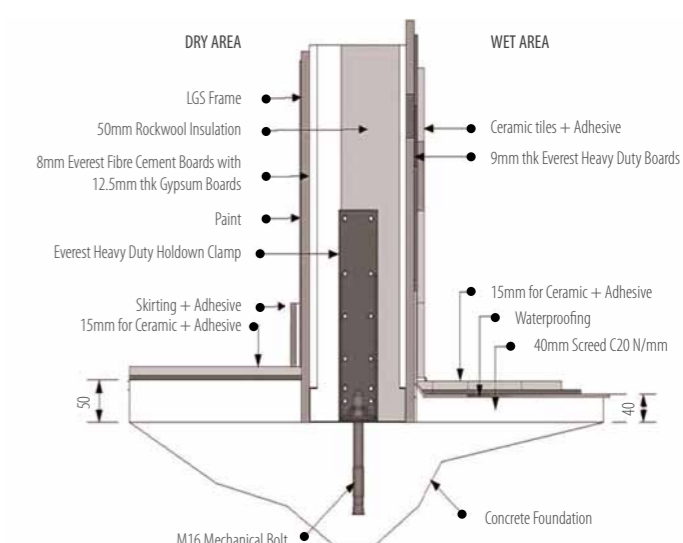


Plan

Typical Ground Floor Details (Dry and Wet Areas)

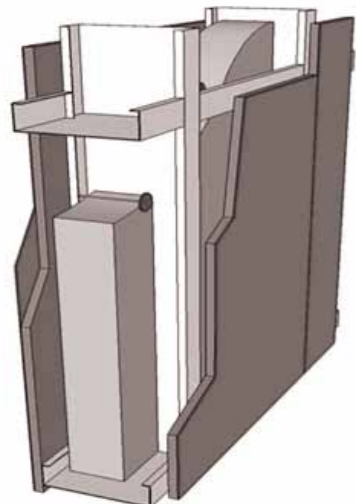


Perspective

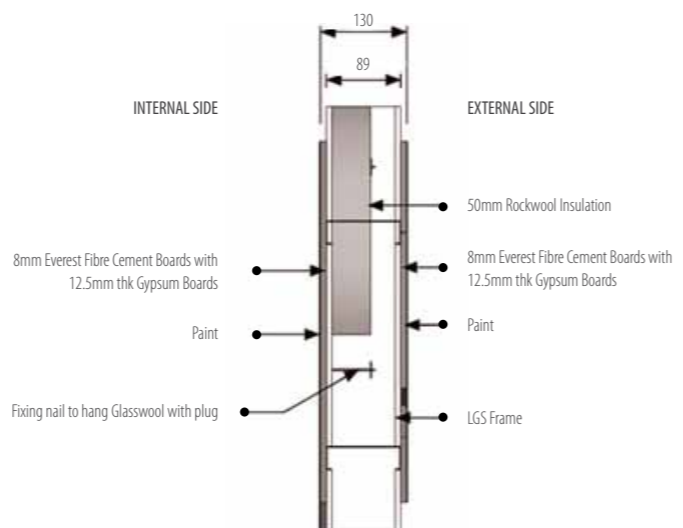


Plan

Typical Internal Wall Section Details

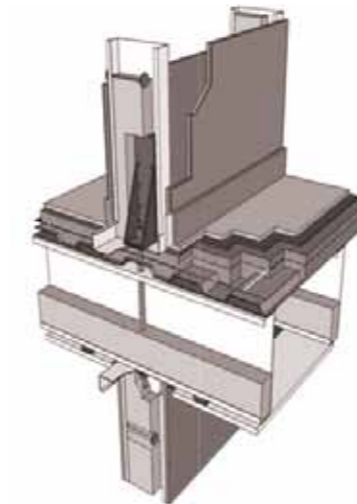


Perspective

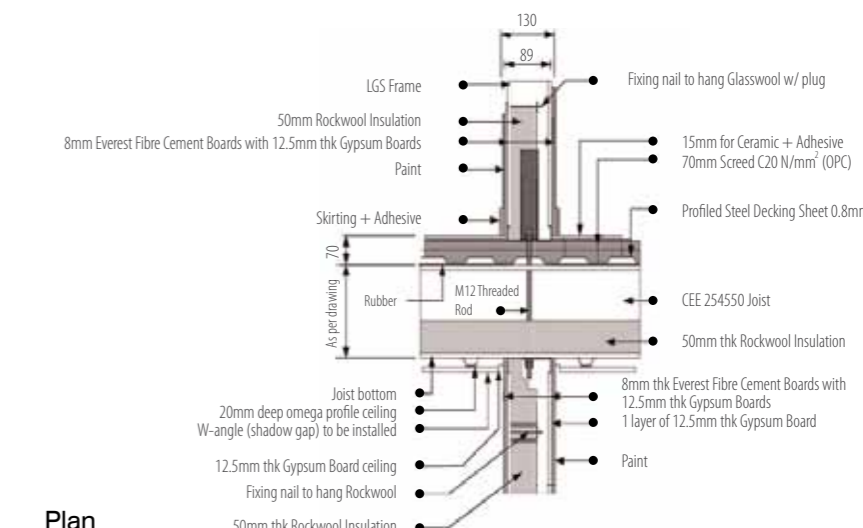


Plan

Typical Ground Floor and First Floor Details



Perspective



Plan

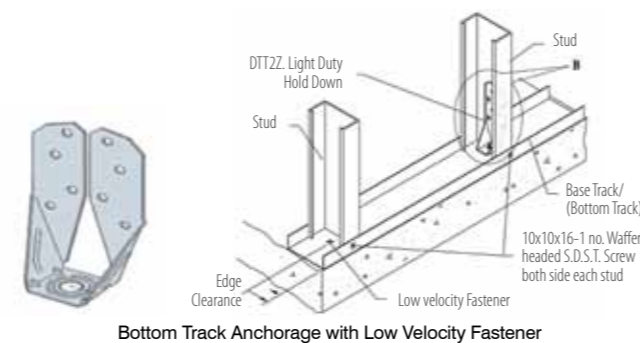
EVEREST SMART STEEL CONNECTORS

Modern design and construction practices use structural connectors to form a continuous load path that can effectively resist wind and seismic forces by reinforcing the structure from the roof to the foundation. Everest Smart Steel connectors are designed to enable structures to resist the movement, stress, and loading that results from natural events such as earthquakes and high velocity winds ultimately providing better structural stability.

Light Duty Holdowns

The Light Duty Holdowns are provides proper rigidity and stability to our LGS wall frames. These holdowns are used basically for Ground Floor structures.

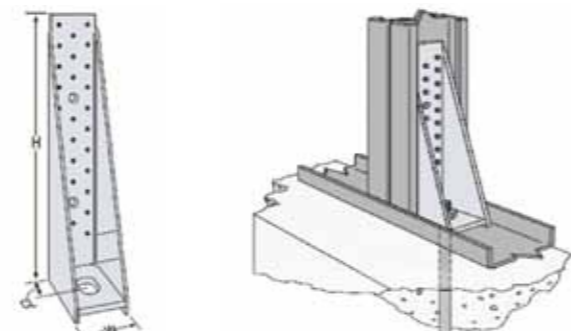
MODEL NO.	DESCRIPTION	DIMENSIONS (MM)
ESSC - LDH	Length	1776.40
	Width	8.26
	Bottom face dimensions	4.127 x 4.127
	Thickness	2.50



Heavy Duty Holdowns

The Heavy Duty Holdowns are more or less similar to our Light Duty Holdowns. These holdowns also provide better structural stability and are used for G+1 or above structures.

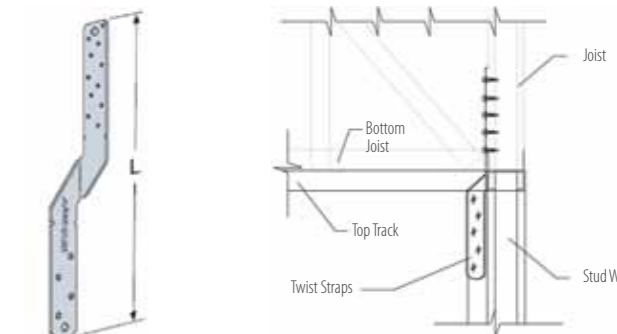
MODEL NO.	DESCRIPTION	DIMENSIONS (MM)
ESSC - HDH	Size of Material	280 x 85 x 59
	Thickness of Material	3.00
	Base Plate Thickness	8.00
	Base Plate Hole Size	24.00



Twist Straps

Twist straps provide a tension connection between two members. They resist uplift at the heel of a truss/ joist economically.

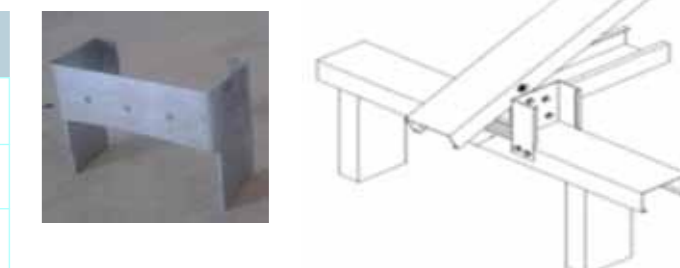
MODEL NO.	DESCRIPTION	DIMENSIONS (MM)
ESSC - TS	Length	305.00
	Width	32.00
	Hole to hole distance	25.00
	Thickness	1.60



H-Brackets

This is another type of Bracket, namely 'H-Bracket', which can be used in a similar way to a Truss/Joist Tiedown.

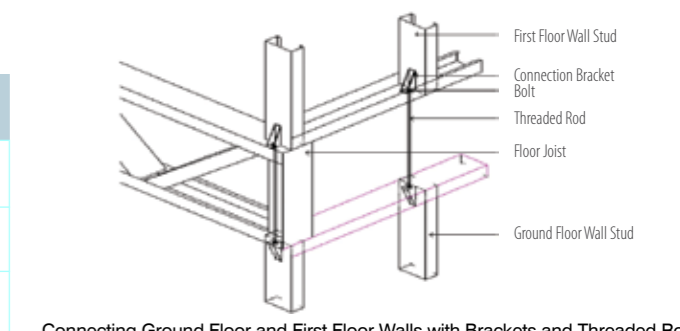
MODEL NO.	DESCRIPTION	DIMENSIONS (MM)
ESSC - HB	Length	120.00
	Width	90.00
	Thickness	0.75/ 0.95



Threaded Tie Rod

This is another type of Bracket, namely 'H-Bracket', which can be used in a similar way to a Truss/Joist Tiedown as a general purpose tie.

MODEL NO.	DESCRIPTION	DIMENSIONS (MM)
ESSC - TTR	Length	550.00
	Diameter	14.00
	Threaded Portion (both sides)	150.00

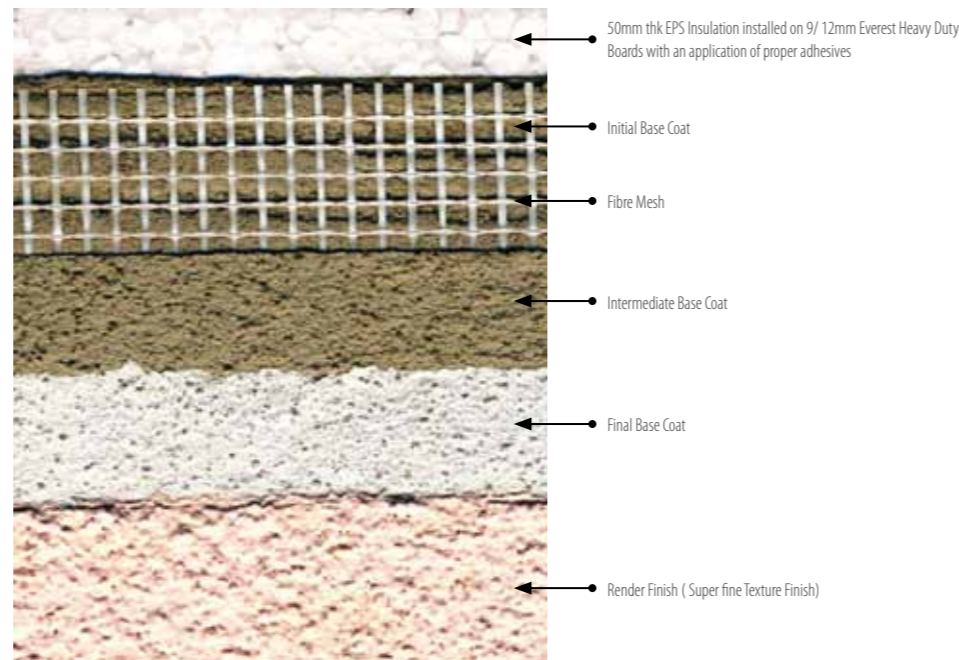


FINISHING SYSTEMS

Everest Smart Steel Buildings allow you to choose from a range of finishes that enhance the aesthetics of your projects. Whether it be elegant exteriors or plush interiors, pick from the following to give your design its desired look:

- Groove Finish on Heavy Duty Board
- Cement Planks Finish - Available in yellow pre-primed form, these can be finished in Burma Teak, Golden Beech and Walnut polishes.
- Render Finish
- Exterior Insulation Finishing System (EIFS)

** Besides the above finishes, we can also provide ACP/ Stone Finish*



FREQUENTLY ASKED QUESTIONS

What is Smart Steel?

Smart steel is a faster way of construction with steel by primarily using cold form sections and dry construction methodology.

What is the life span of a Smart Steel Building?

Theoretically, it is designed for up to 50 years but practically it is much more. However this system can be designed for a life span of 50 years also.

What is the maximum number of floors we can design?

Using the cold formed profile of 89mm width, we can design upto G+1 Structures. However, we can integrate other structural steel sections for taking the structure till G+3.

What is the maximum span that a Smart Steel Building can take?

If spanned with a truss, it can take up to 15 metres while spanning with joists allows upto 5 metres. However, loading criteria governs the permissible span.

How safe is Smart Steel against earthquake and wind?

This system is designed as per Indian and International standards. This takes care of all these lateral forces at the time of design and hence it is completely safe.

How safe is Smart Steel against corrosion and fire?

This system uses high tensile steel of 550MPa and Galvanisation of 275GSM. This makes this system corrosion resistant even in coastal areas. Since Smart Steel Buildings use fire retardant material like steel and fibre cement boards etc., the complete system becomes fire retardant.

What is the advantage over brick wall construction?

Smart Steel Buildings is a fast and convenient system since it is pre-engineered with major components being factory-made and allows dry construction. It take only 1/3rd of the time in construction as compared to masonry! Smart Steel Buildings have less wall thickness, which saves and thus allows more space. It is approximately 1/3rd in weight of brickwork and safe for installation on rooftops.

What are the kinds of finishes that one can use on Smart Steel?

Any kind of finish is possible, from paint to stone cladding! It is recommended that all finishing specifications be finalised at the time of design of structure.

How are Electrical and Plumbing fixtures fixed on Smart Steel?

Fixing details are provided as per the drawings and details provided by consultants. Any type of fixtures is possible of Smart Steel Structure.





Presentations in the brochure or any other Everest Industries Limited publications are correct to the best of the knowledge of the company, at the time of preparation. Everest Industries Limited provides this information in an advisory capacity only and reserves the right to change the specifications without prior intimation.



EVEREST INDUSTRIES LIMITED: Genesis A-32 Mohan Co-operative Industrial Estate Mathura Road New Delhi 110044 India. Tel: +91-11-41731951/52 Fax: +91-11-46566370

FOR MORE DETAILS, CONTACT: New Delhi - 9810054479, 9650031191 Mumbai - 9987788005, 9920395301 Pune - 9503058299 Kolhapur - 9987987785 Bengaluru - 9731011497, 9900428148 Kolkata - 9748779833, 9748462052 Bhubaneswar - 9937170233 Chandigarh - 9779094498, 8283835943 Chennai - 9900428148, 8220276622 Hyderabad - 9652480910 Coimbatore - 8220010050 Jamshedpur - 9771430112 Patna - 9771456152 Nashik - 9867202273 Indore/ Bhopal/ Nagpur/ Raipur/ Ahmedabad/ Vadodara/ Gandhidham - 9987788005

Helpline: 09958037777 | smartsteelbuildings@everestind.com | www.everestind.com